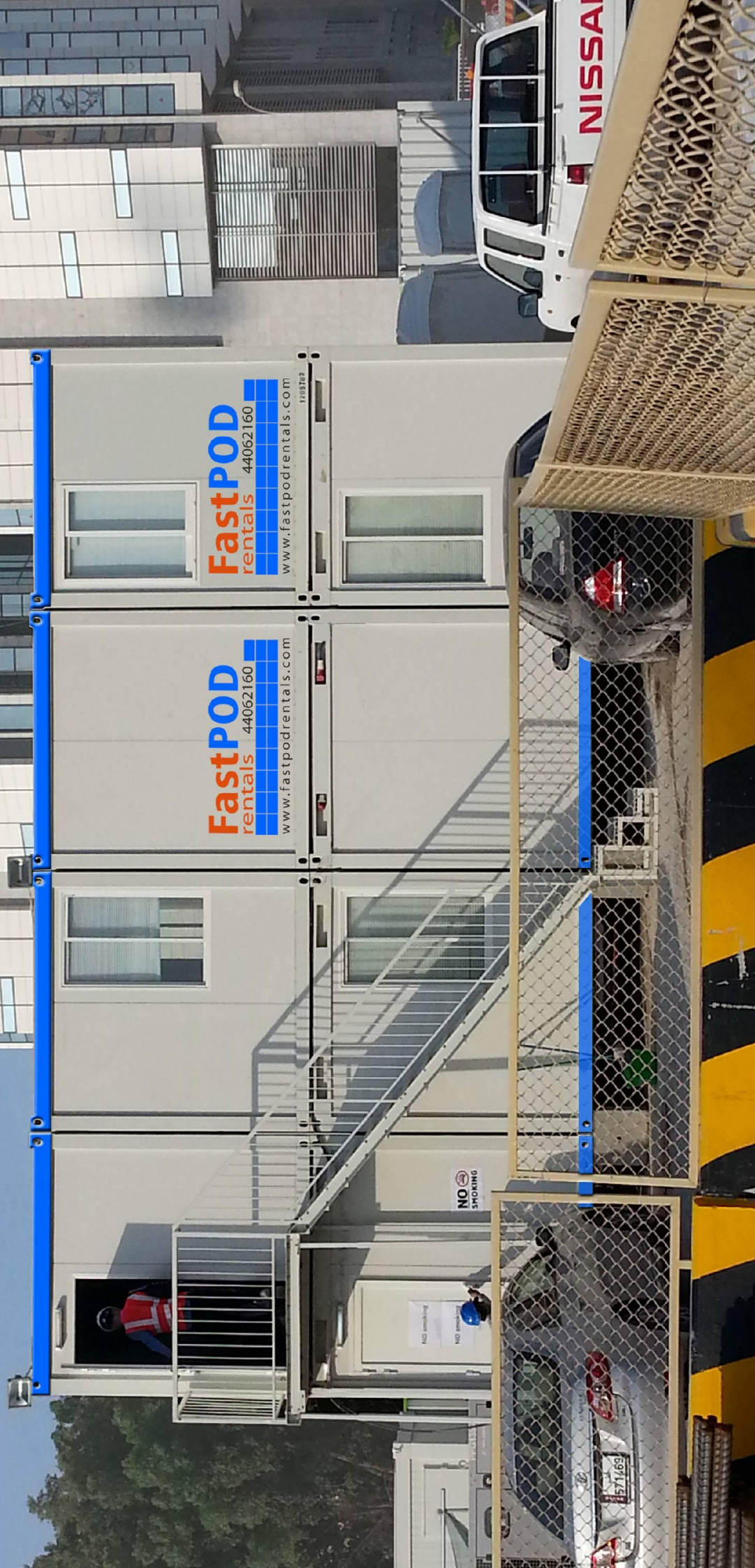


FastPOD
rentals 44062160
www.fastpodrentals.com



FastPOD

rentals 44062160



info@fastpodrentals.com



Fast Solution
Fast Delivery

STANDARD MODULES



CUSTOMIZED MODULES



STANDARD MODULES



FastPOD modular units, offers a quick and convenient space solution suitable for:

- Construction Site offices.
- Meeting rooms.
- Security cabins.
- Mess Halls.
- Promotional and Marketing offices.
- Accommodation units.
- Class Rooms

FastPOD modular units can be modulated according to your space requirements and can be expanded according to your growth needs.

FastPOD modular units can be stacked ground plus two floors allowing optimization of space.

FastPOD modular units are fully insulated and fire rated to ensure a safe and comfortable environment.

At **FastPOD** we offer a highly flexible service which begins with our technical team finding the right solution for your requirements through to immediate delivery.

FastPOD units are pre-wired and require only an external electrical connection.

FastPOD units are delivered with foundations and steps. Air-conditioning is available as an optional extra.

For more information about our service contact **FastPOD** at

Telephone : +974 44602160 / +974 44602162

E-mail : info@fastpodrentals.com
sales@fastpodrentals.com

Web site : www.fastpodrentals.com

Twitter : www.twitter.com/FastPOD_rentals



TECHNICAL SPECIFICATIONS:

I. GENERAL

The standard container for various purposes is suitable for international container transport. It is of appropriate external dimensions and has connections for lifting and fixing or compounding

The container is designed as a light construction consisting of floor and roof frames and corner profiles. The construction enables compounding of individual containers in longitudinal and transverse directions without limits. It is also enables stacking of containers up to 3 floors in height (ground floor + 2 floors).

The wainscots of the container are made of light insulation panels and offer pleasant climate in the interior due to their building and physical properties. Used materials are environment friendly.

II. BUILDING SPECIFICATION

DIMENSIONS (ISO Standard 1161)

Basic 20' Container dimensions:

External length / inner length-----6.055 m / 5.875 m

External width / inner width----- 2.435 m / 2.255 m

External height / inner height-----2.591 m / 2.320 m

STEEL FRAMEWORK

Material : Steel profile in a thickness of 2 to 4mm, steel quality S235 JR (EN10029) or similar.

Surface Working: Sand blasting in a quality of Sa 2.5 (ISO 8501), High Solid paint in nominal dry film thickness 120µm (ISO 12944-5)

Fittings Rainwater: 8 corner pieces (dimensions according to ISO standard 1161, pipe in the roof framework

FLOOR

COMPOSITION

External wainscot : Flat galvanized (Zn coating 180g/m²) steel sheet metal in a thickness of 0.5mm, painted (Top side 10µm) Steel sheet metal, ASTM A653 CS quality.

Insulation filling : Mineral wool in a thickness of 100mm (EN 13162, reaction to fire acc. To EN 13501 Class 1) among steel transverse supports.



Cement board in a thickness of 22mm, dry rooms and wet rooms and the corridors

Glued final PVC floor covering in a thickness of 1.5mm (EN 649) and colour in Grey, with welded connections; wet rooms aluminum corner element is placed (it reaches the wall up to a height of 100mm)

Permitted loading: 2.00 KN/m²

Coefficient of thermal conductivity: $k=0.33 \text{ W/m}^2\text{K}$

CEILING

COMPOSITION

External /Internal

Wainscot : Flat galvanized, coated metal sheet in the thickness of 0.5mm (Zn coating 180g/m²) and painted (Top-22µm SP, Bottom -8µm) steel sheet metal, in ASTM A653 CS quality, fitted to be slightly convex.

Insulation filling : Mineral wool in a thickness of 100mm (EN 13162, reaction to fire acc. To EN 13501 Class 1) among steel transverse supports.

Inner wainscot in

Dry rooms : Plastic laminated steel sheet thickness of 0.5mm with a foil in white in white colour; joining of chipboards with PVC profiles – E1(EN120)

Inner wainscot in

Wet rooms : Shallow profiled, galvanised (180g/m²) and painted steel sheet metal in a thickness of 0.5mm.

Permitted loading: 1.00 KN/m²

Coefficient of thermal conductivity: $k=0.32 \text{ W/m}^2\text{K}$

FAÇADE WALLS

Dry Rooms

Façade panels of type FTVGG-60, in-built width 1145mm, total thickness 60mm; *CE marked product* in accordance to EN 14509:2006/AC:2008.

COMPOSITION:

Outside surface smooth profiled, galvanized (140g/m²) and colour coated (25µm, EN 10169-1) steel sheet metal in a thickness of 0.5mm, acc. To EN 10326.

Insulation filling : Mineral wool in a thickness of 60mm, acc to EN 13162, reaction to fire class A1-s1,d0 acc. To EN 13501-1.



Inside surface smooth profiled, galvanized (140 g/m²) and painted (25 µm, EN 10169-1) steel sheet metal in a thickness of 0.5 mm, acc. To EN 10326.

Flashing elements in the interior made of galvanized (180g/m²) and painted (Top-18 µm SP, Bottom -8µm) steel sheet metal in a thickness of 0.5mm, in ASTM A653 CS quality.

Permitted loading: 0.50 KN/m²

Coefficient of thermal conductivity: $U = 0.39 \text{ W/m}^2\text{K}$

Wet Technical Rooms

Façade panels of type FTVGG-60, in-built width 1145mm, total thickness 60mm; CE marked product in accordance to EN 14509:2006/AC:2008.

COMPOSITION:

Outside surface smooth profiled, galvanized (140g/m²) and colour coated (25µm, EN 10169-1) steel sheet metal in a thickness of 0.5mm, acc. To EN 10326.

Insulation filling: mineral wool in a thickness of 60mm, acc to EN 13162, reaction to fire class A1-s1, d0 acc. To EN 13501-1.

Inside surface smooth profiled, galvanized (180g/m²) and painted (Top-18 µm SP, Bottom -8µm) steel sheet metal in a thickness of 0.5mm, in ASTM A653 CS quality.

DOOR

Aluminum, single fold, filled doors, light opening 810/2000 mm, furnished with a cylinder lock with 3 keys. Door frame made of AL painted sheet metal in a thickness of 1.5mm; Door panel 40mm thick, made of Fe painted sheet metal in the AL framework, insulated with polyurethane foam 40mm; Door in White color.

Coefficient of thermal conductivity: $U = 0.45 \text{ W/m}^2\text{K}$

PARTITION WALL DOORS

Aluminum powder coated doors with the thickness of 40mm and the size of 650*1680mm and with keyless lock.

WINDOWS

Windows are made of PVC, single fold, in white colour, and of dimensions 885/1200 mm, glazed with insulation double-layer glass in a thickness 4/15/4 mm, with mechanism to open side and top (tilt and turn type) and furnished with PVC rolling shutters.

Coefficient of thermal conductivity: $U = 2.9 \text{ W/m}^2\text{K}$



CONNECTION KITS (BETWEEN BASIC CONTAINER UNITS)

Basic Container units have enclosed all needed material for joining of them together and consist of:

Joining Consoles

Sealing rubber

Floor inserts (Cement board panel 22mm thick; PVC floor cover)

Ceiling masks (galvanized and painted steel sheet metal; mineral wool)

Wall masks (cement board panel, mineral wool)

ELECTRICAL INSTALLATIONS

Standard : According to British Standard (BS 7671)

Voltage : 230/400 V, 50Hz

Network connection: CEE-connection plug / socket, 5-pole, 32 A, 400 V, mounted on the outer wall of the container recessed into top frame in upper corners of a shorter side wall.

Inner distribution

System : Electric distribution box, NyM-J cables of suitable dimensions (6.0 mm², 2.5 mm², 1.5 mm²), surface mounted.

Protection : Protection power supply FI-switch (40/4E-0,03A), automatic fuses (B-characteristics) of suitable power (10A, 16A, 3x20A)

Earthing : Galvanized connector with a cross clip of dimensions 60 x 60 mm welded on the bottom frame.

FITTINGS:

Main distribution board IP-55

Single fluorescent lights 1x58 W

Surface mounted 10A switches 220V

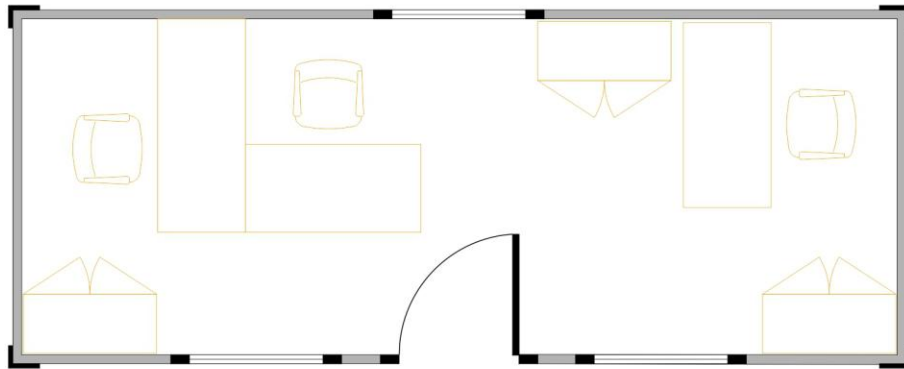
Surface mounted sockets 220V (British type), 13A

British type 15A surface mounted socket for AC

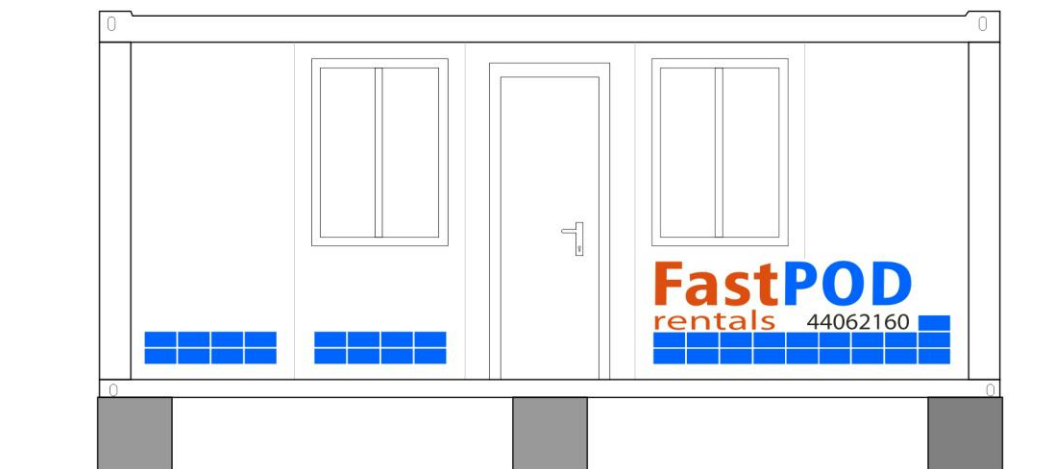
32A, 5 poles, 380V industrial socket – 01 nos male socket and 01 nos female socket in each container

9V, battery operated, smoke detector





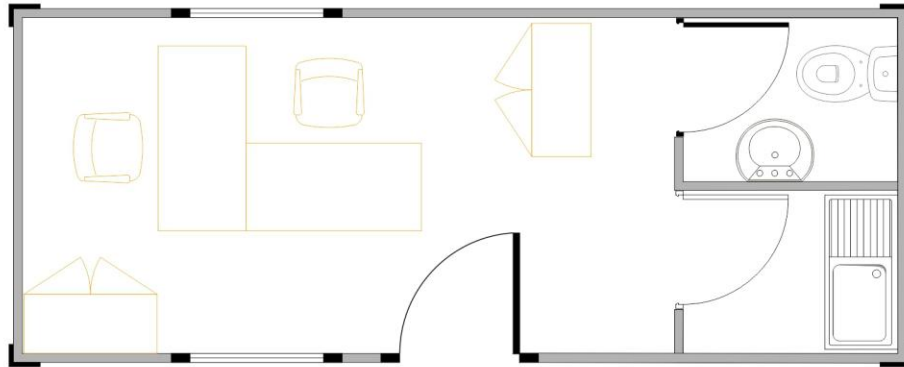
PLAN VIEW



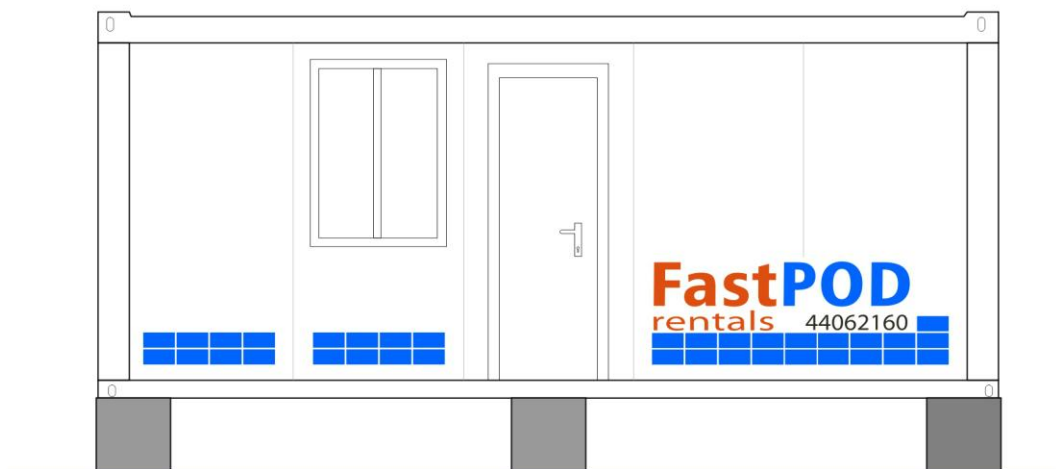
ELEVATION

CABIN (OFFICE)
RAC 001





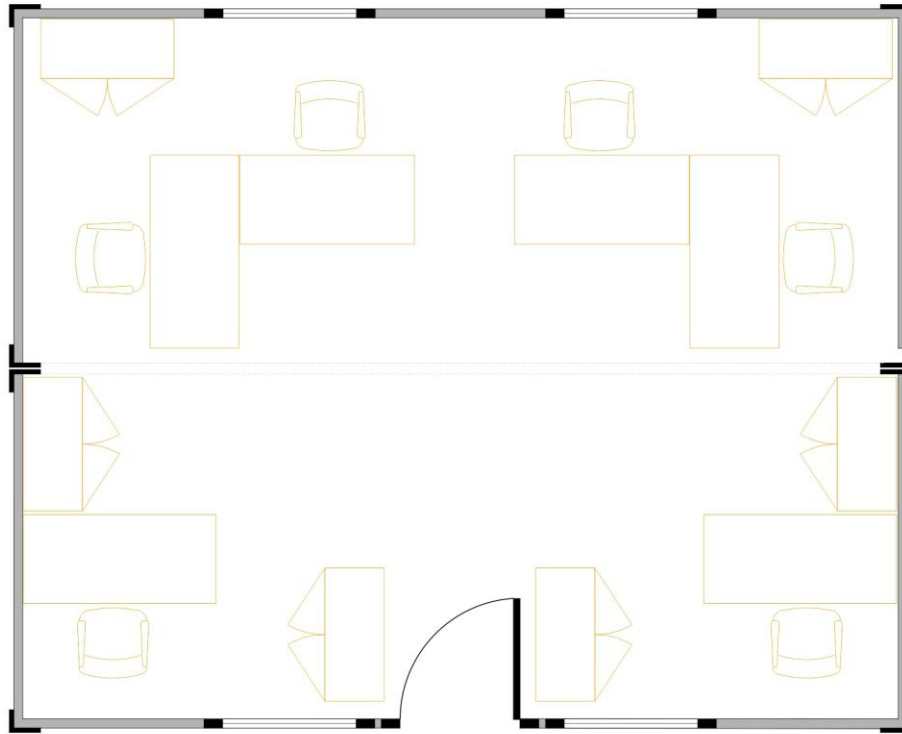
PLAN VIEW



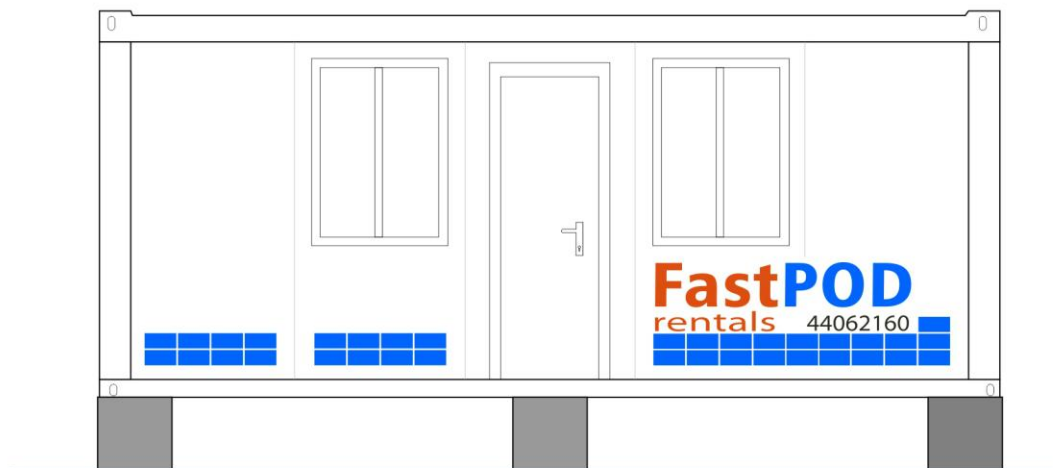
ELEVATION

CABIN WITH TOILET & KITCHEN (OFFICE)
RAC 002





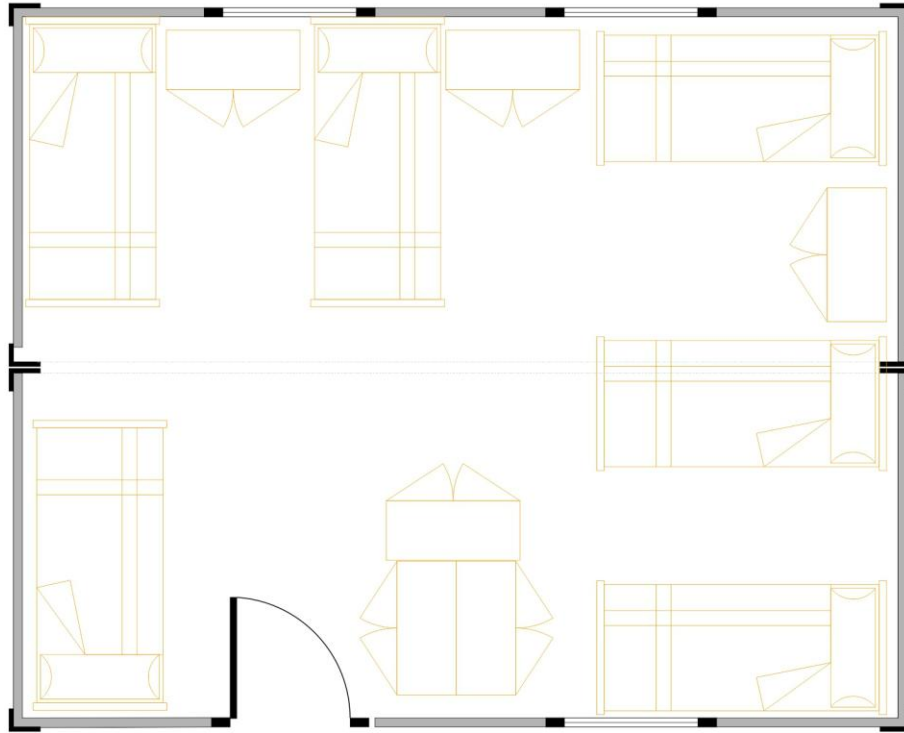
PLAN VIEW



ELEVATION

CABIN (OFFICE)
RAC 003





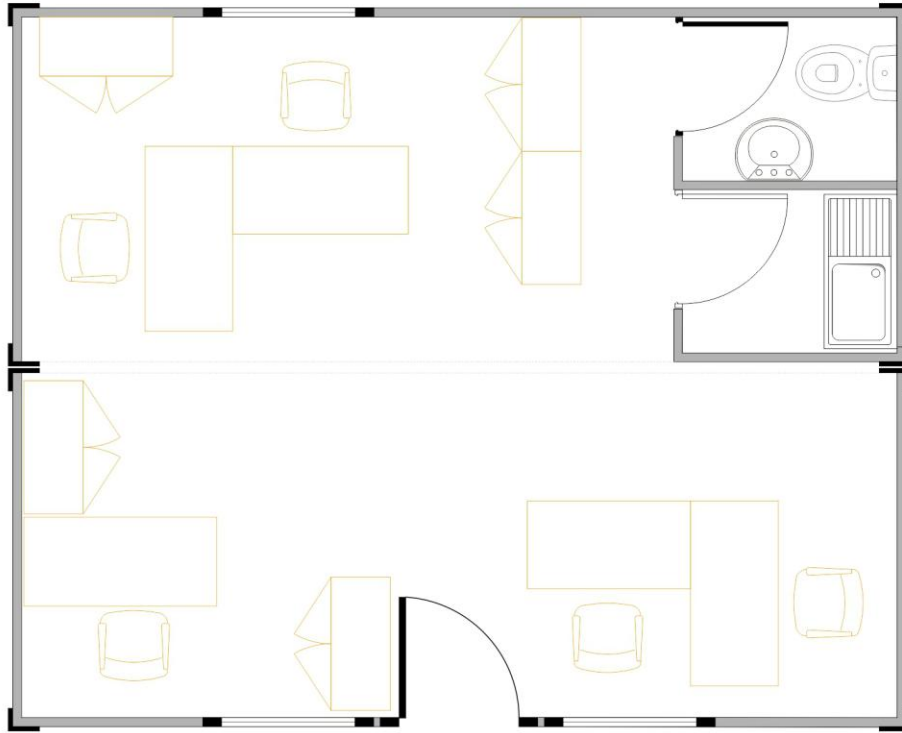
PLAN VIEW



ELEVATION

CABIN (ACCOMMODATION)
RAC 003





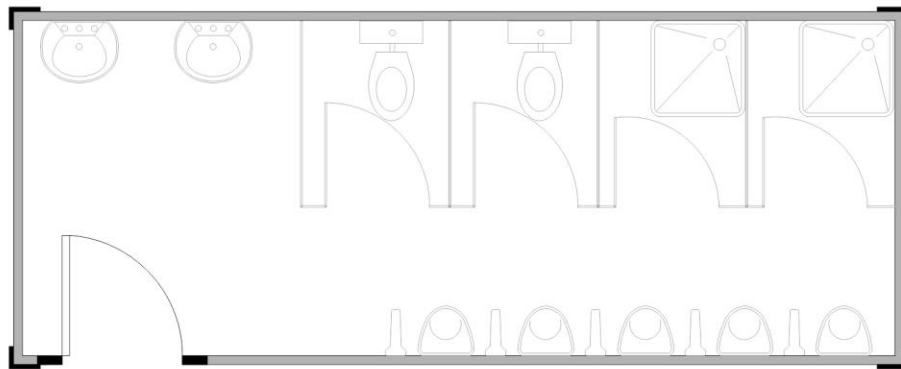
PLAN VIEW



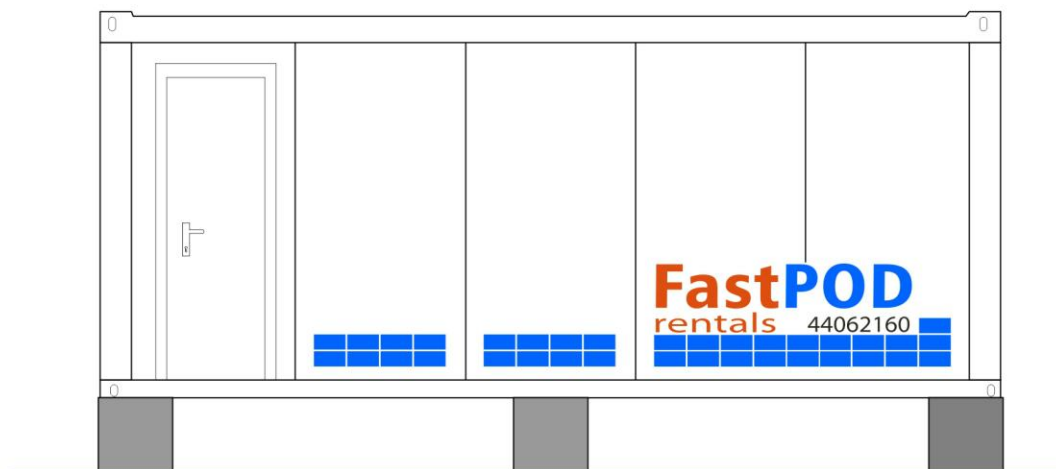
ELEVATION

CABIN WITH TOILET & KITCHEN (OFFICE)
RAC 004





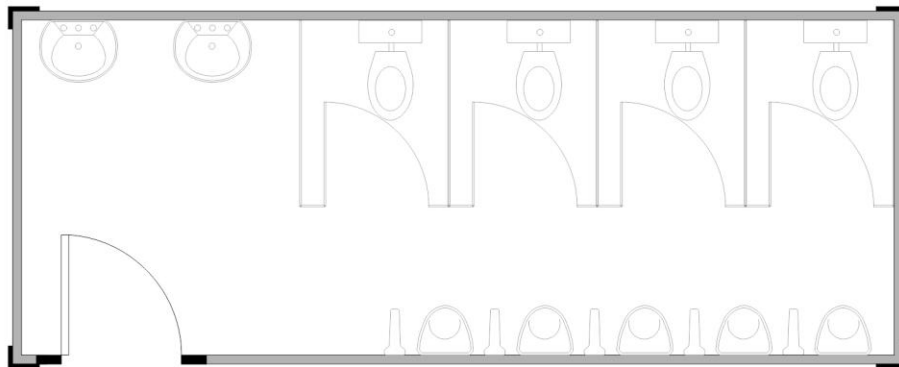
PLAN VIEW



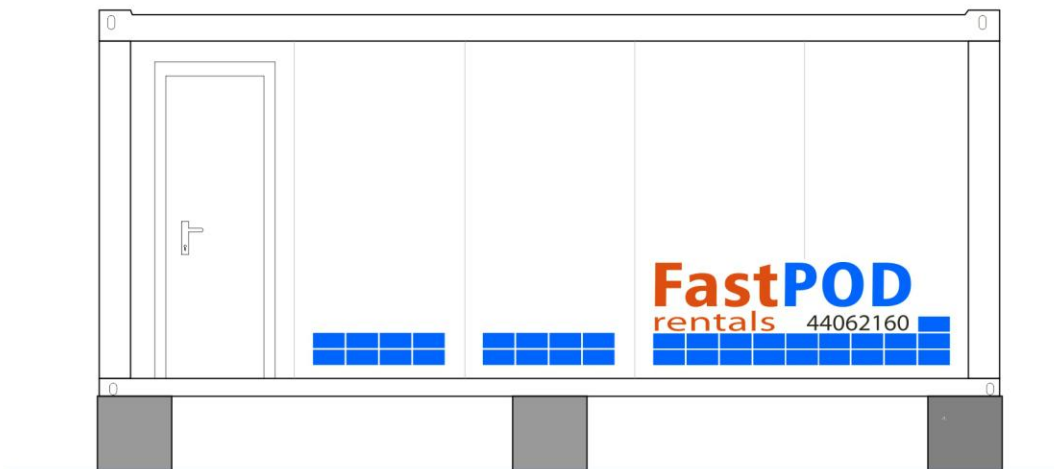
ELEVATION

CABIN WITH TOILET & SHOWER
RAC 005





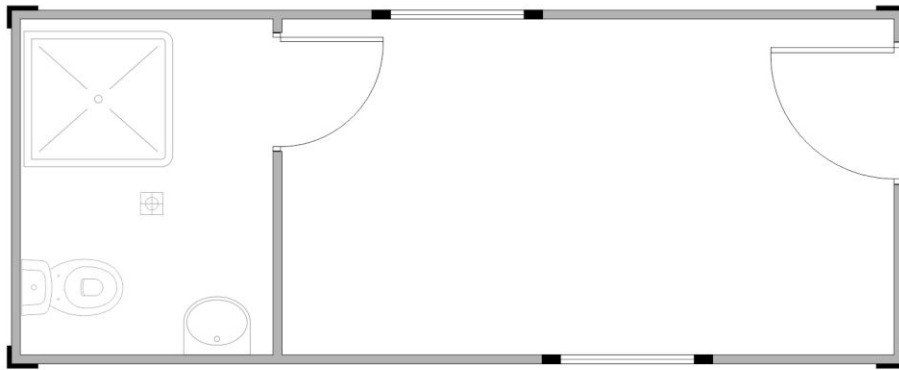
PLAN VIEW



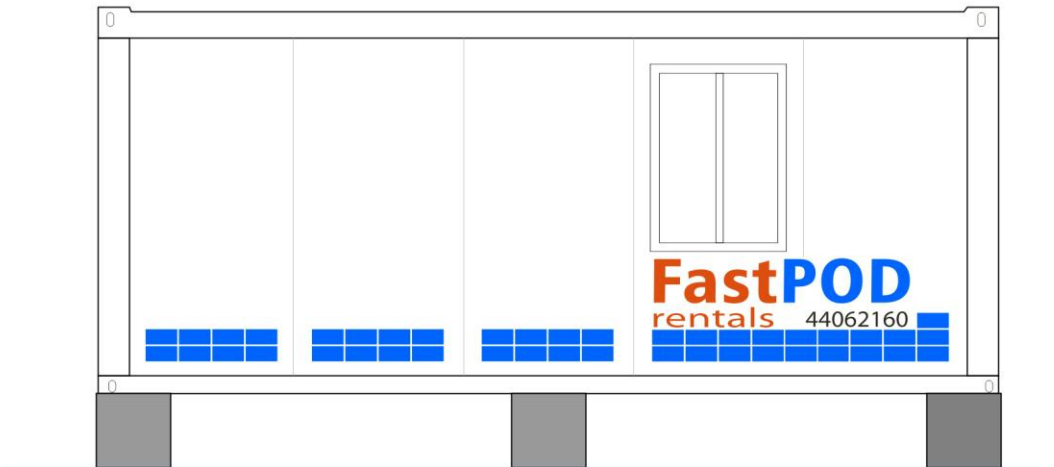
ELEVATION

CABIN WITH TOILET
RAC 006





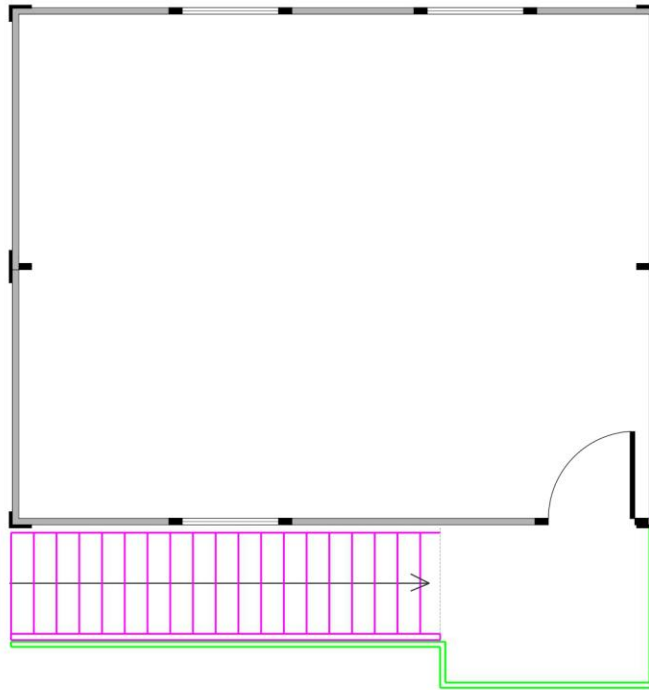
PLAN VIEW



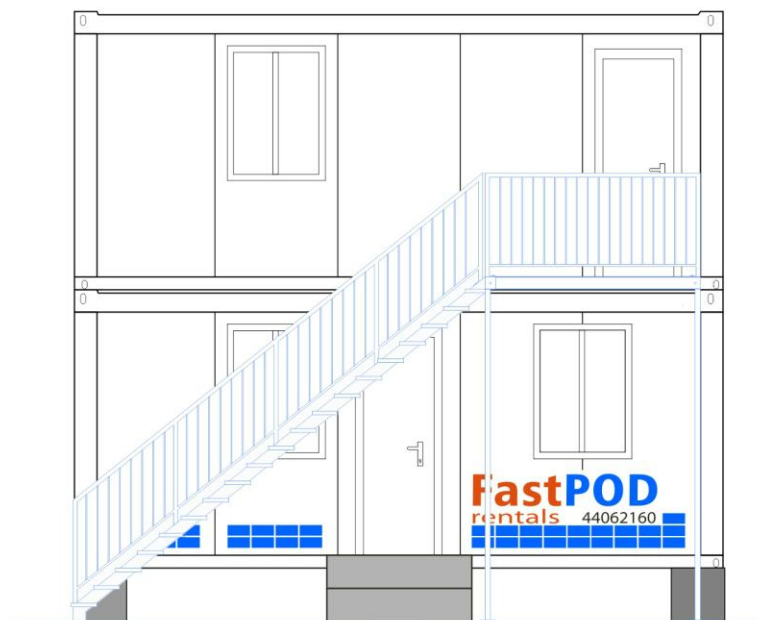
ELEVATION

ACCOMMODATION CABIN WITH BATH ROOM
RAC 007





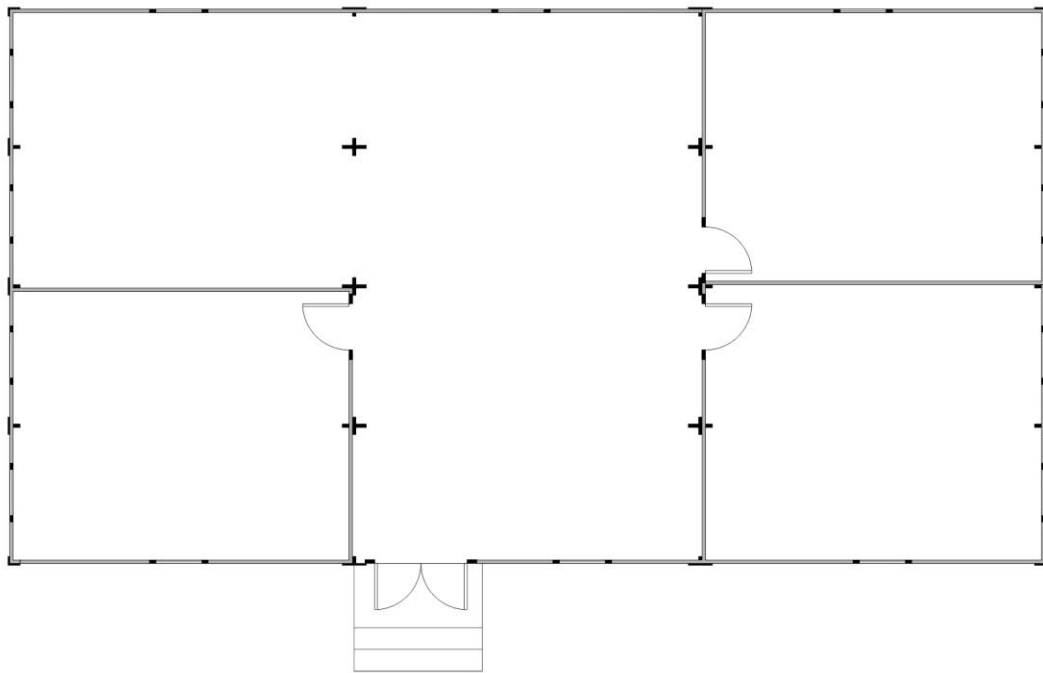
FIRST FLOOR PLAN VIEW



ELEVATION

CABIN (G+1)
RAC 008





PLAN VIEW



ELEVATION

MODULAR OFFICES
RAC 009



Fast Solution
Fast Delivery



